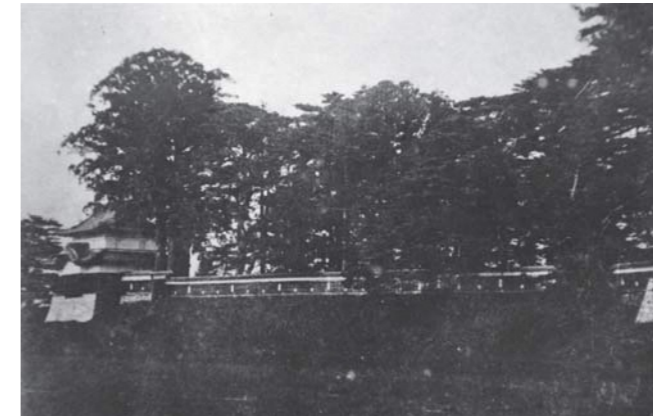


Tsurugaoka Castle Ninomaru Site

The Ninomaru Square is the place in which the Ninomaru (lit. second circle, or the second enclosure adjacent to the main castle compound) was located within Tsurugaoka Castle, between the Ote-gomon gate and the turret of the Ninomaru. The stone walls of the Ninomaru are presumed to have been constructed in 1622 (Genna 8) or later, during the Sakai regime. The walls were 3.0 to 4.0 meters above the present day ground level, characteristically jutting out into the outer moat.

The photo and the drawing of the castle on the right, both of which are from the early Meiji period (late 19th through early 20th Century), show earth retaining piles under the moat surface, earth retaining stones, mounds, stone walls, and a fence.

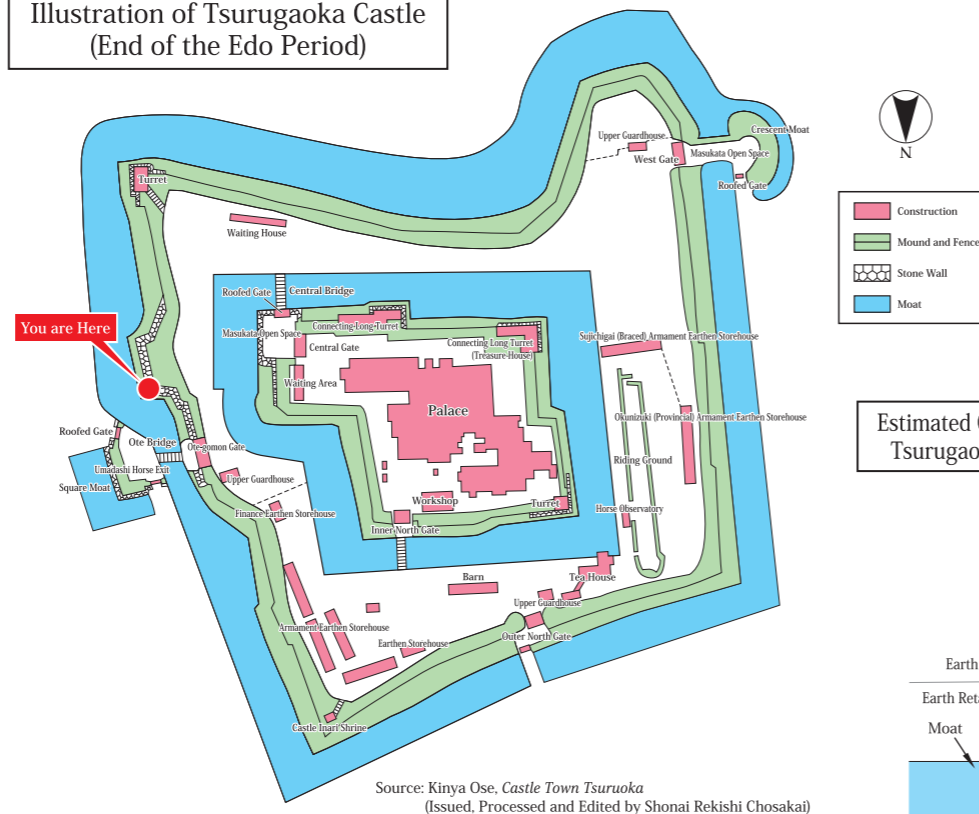


Turret of the Ninomaru of Tsurugaoka Castle
(Early Meiji Period, Photo owned by Tsuruoka City Kyodo Siryokan Museum)



Shizumasa Ishikawa, *Tsurugaoka Castle Painting* (owned by Chido Museum)

Illustration of Tsurugaoka Castle
(End of the Edo Period)



Source: Kinya Ose, *Castle Town Tsuruoka*
(Issued, Processed and Edited by Shonai Rekishi Chosakai)

Estimated Cross-section View of
Tsurugaoka Castle Ninomaru

